



22 Tay Terrace

| Newport | DD6 8AZ

Thorntons 
The right way to move





22 Tay Terrace

| Newport | DD6 8AZ

Offers Over £260,000

Description

Boasting a truly enviable position, this traditional two bedroom stone built property is presented to the market in immaculate condition and offers outstanding views over the River Tay. Newport remains a popular and desirable location with buyers due to excellent schooling, shopping and transport links to Dundee and wider Fife.





Description

Accommodation is bright and spacious comprising main reception hallway with sizeable dining room open to a beautiful kitchen off. The kitchen is fitted with a range of quality units, tiling and appliances whilst also benefiting from a practical utility space off. Access to the rear garden can be obtained via the utility. A spacious ground floor double bedroom and contemporary shower room complete the ground floor.

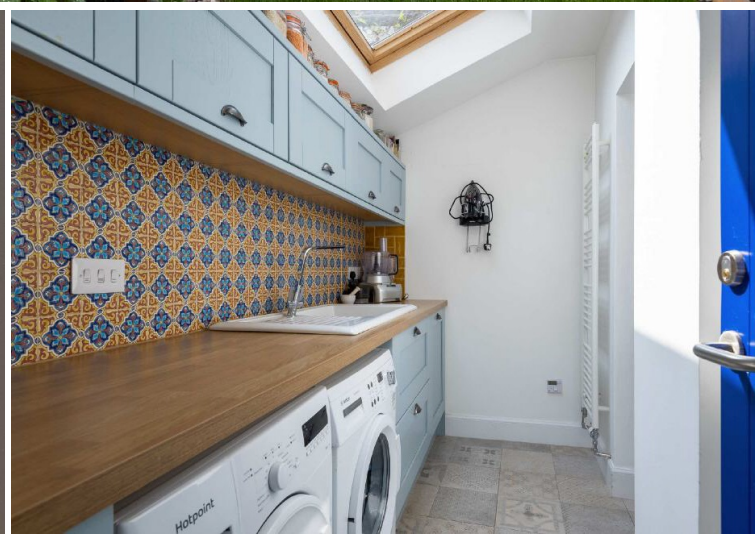
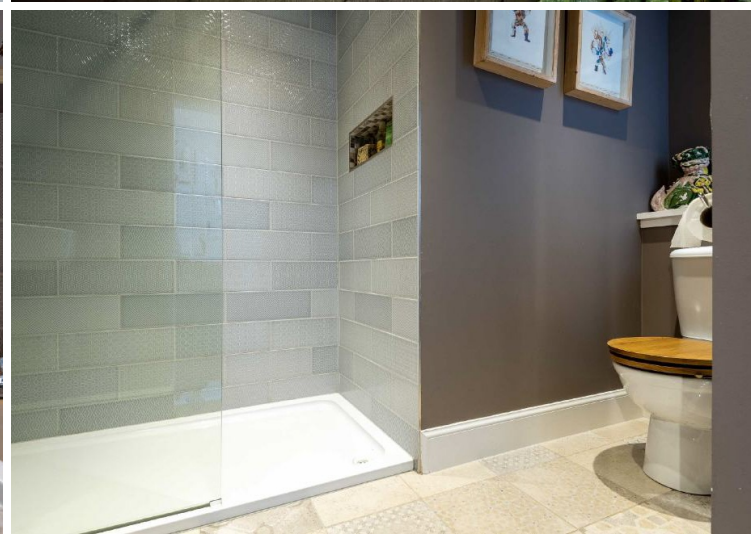
The first floor provides a stunning lounge with dual aspect views over the surrounding area, a second double bedroom and a luxurious family bathroom.

The specification includes gas central heating and triple glazing.

Externally the property is set within manicured garden grounds to the front and rear. With parking readily available on street. EPC Rating - D









Dining Area	21'1 x 9'2	6.43m x 2.79m
Kitchen	8'6 x 6'10	2.59m x 2.08m
Utility Room	9'4 x 5'6	2.84m x 1.68m
Bedroom 1	18'8 x 14'0	5.69m x 4.27m
Shower Room	9'0 x 6'0	2.74m x 1.83m
Lounge	14'7 x 11'5	4.45m x 3.48m
Bedroom 2	13'19 x 10'9	4.45m x 3.28m
Bathroom	9'7 x 7'5	2.92m x 2.26m

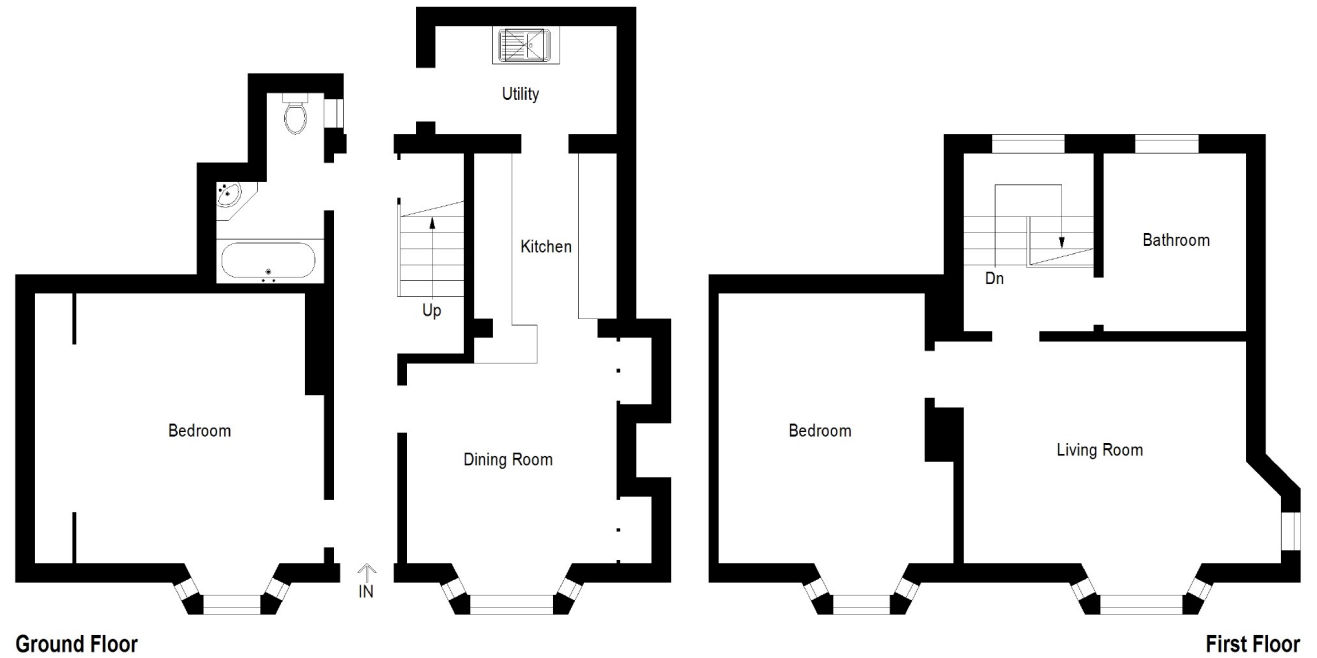


Illustration For Identification Purposes Only. Not To Scale (ID:670183 / Ref:74502)