



2 Craigshannoch Road

| Wormit | DD6 8ND

Thorntons 
The right way to move





2 Craigshannoch Road

| Wormit | DD6 8ND

Offers Over £200,000

Description

This spacious semi detached one and half storey bungalow is well situated offering stunning views and convenient access to a range of amenities including excellent local schooling, shopping and a frequent bus link within Fife and onwards to Dundee City Centre.





Description

The subject property is located on an elevated position providing stunning views over the rooftops towards the River Tay, the bridge and Dundee.

The accommodation is bright, spacious and adaptable. An entrance hallway with two useful storage cupboards leads to a bright lounge with feature fire, a large fully fitted dining kitchen with useful utility room/rear porch off and a spacious dining room with double doors leading to the conservatory. A ground floor bedroom with fitted wardrobes and useful shower room completes the ground floor accommodation.

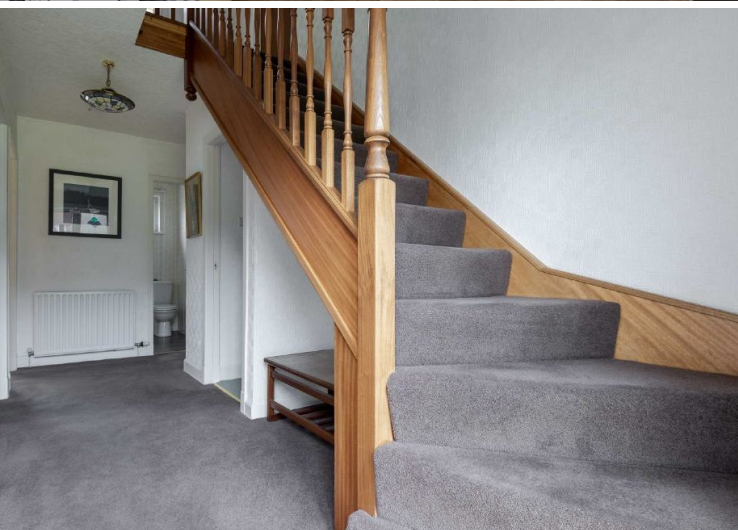
The first floor accommodation has two bedrooms, one with wall to wall fitted wardrobes, a bathroom and store cupboard.

The property benefits from a neutral decor throughout, gas central heating and double glazing.

Externally a large driveway leads to garage providing generous off street parking. The front, rear and side gardens have borders planted with mature shrubbery with the front benefitting from a lawned area. The rear garden fully enclosed with a greenhouse and wooden shed. EPC D









GROUND FLOOR



1ST FLOOR

Kitchen	14'3 x 10'8	4.34m x 3.25m
Utility Area	7'2 x 8'2	2.18m x 2.49m
Dining Room	10'4 x 10'0	3.15m x 3.05m
Conservatory	12'6 x 9'7	3.81m x 2.92m
Lounge	14'2 x 12'1	4.32m x 3.68m
Bedroom 1 (Downstairs)	11'6 x 10'8	3.51m x 3.25m
Shower Room	6'5 x 5'6	1.96m x 1.68m
Bedroom 2	9'9 x 9'7	2.97m x 2.92m
Bedroom 3	13'5 x 12'5	4.09m x 3.78m
Bathroom	8'5 x 6'6	2.57m x 1.98m

aspc êspc fifespc pspc tspc spc

