



Garden Cottage,
| Blebo Craigs | KY15 5TZ





Garden Cottage,

| Blebo Craigs | KY15 5TZ

Description

Picture postcard C listed stone built detached cottage, with fine views over the rolling Fife countryside, located in an idyllic setting within the private Blebo Estate. Ideally situated for those wishing to enjoy the many amenities of the nearby historic town of St Andrews whilst living in a semi rural environment.





Description

The cottage is currently operated as a successful holiday letting business with many repeat visitors and recently gained a highly prized award for its consistently high reviews from customers.

The charming cottage has been beautifully renovated and refurbished giving modern comfort whilst retaining attractive original features. The property has many lovely qualities from the elegant sitting room with its feature bay window and open fire set within a stone surround to the bright dining room with exposed stone walls, feature double glazed window and door giving access to the sheltered walled garden.

Presented in fresh decorative order the bright accommodation comprises entrance hall, sitting room, dining room, luxury breakfasting kitchen, two double bedrooms, bathroom and shower room. All furniture and furnishings are available by separate negotiation.

To the front of the property there is a small garden laid to a variety of attractive flowering plants with pebbled path leading to a feature covered porch. The south west facing sheltered walled garden has various paved patios where you can sit and enjoy the morning and afternoon sun. There is brick built garage and a brick built wood shed.

Although operated as a holiday let, Garden Cottage could be utilised as a very comfortable private residence or holiday home.

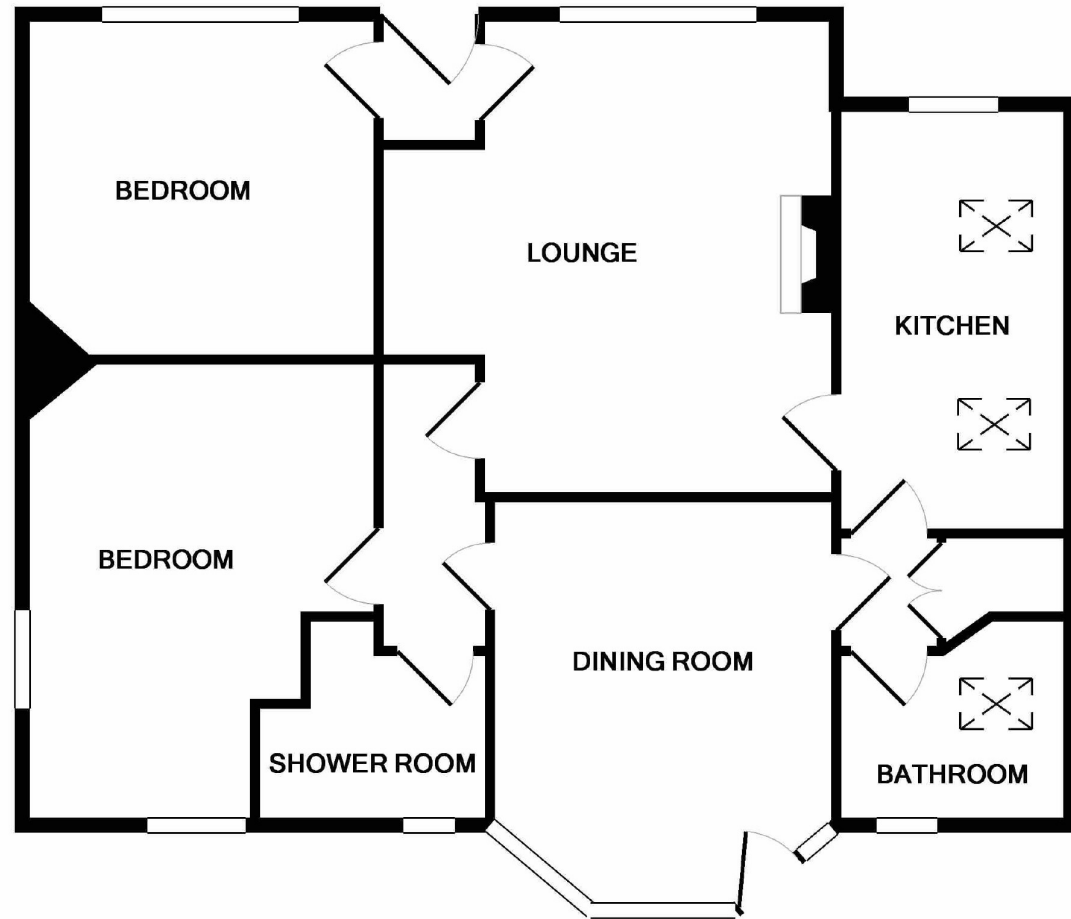
It is rare that a property of this charm is offered to the market and as such should be viewed at the earliest opportunity to fully appreciate all it has to offer. EPC E







Sitting Room	17'3 x 15'4	5.26m x 4.67m
Dining Room	13'8 x 10'4	4.17m x 3.15m
Breakfasting Kitchen	14'0 x 6'8	4.27m x 2.03m
Bedroom 1	16'8 x 11'6	5.08m x 3.51m
Bedroom 2	13'0 x 11'4	3.96m x 3.45m
Bathroom	6'10 x 5'7	2.08m x 1.70m
Shower Room	7'5 x 6'7	2.26m x 2.01m



Whilst every attempt has been made to ensure the accuracy of the floor plan contained here, measurements of doors, windows, rooms and any other items are approximate and no responsibility is taken for any error, omission, or mis-statement. This plan is for illustrative purposes only and should be used as such by any prospective purchaser. The services, systems and appliances shown have not been tested and no guarantee as to their operability or efficiency can be given
Made with Metropix ©2018

aspc êspc fifespc pspc tspc spc

