



23 Silverdyke Gardens

| Cellardyke | KY10 3FH

Thorntons 
Let's get a move on!





23 Silverdyke Gardens

| Cellardyke | KY10 3FH

Description

This pleasantly located Jura style home enjoys an open outlook to the rear over the fields toward Kilrenny and the Forth in the distance. The property has had several upgrades including an entrance porch and the rear of the house has been made open plan combining the dining room, kitchen and breakfast room.





Description

The kitchen is an upgraded kitchen and there are double doors to the garden and a further set adjoining the lounge making a superb entertaining space. Both rooms benefit from solid oak flooring.

The utility room is off the kitchen, the wc and an under stair cupboard complete the ground floor. The first floor master bedroom has fitted wardrobes and a luxurious spacious en suite shower room. Two of the further three bedrooms benefit from fitted wardrobes. The family bathroom and linen cupboard complete the upper floor.

The garden grounds are well maintained comprising a monoblock drive giving access to the garage at the front and a grass. An attractive patio with edged detailing extends from the rear of the house and there is a grass lawn.

Anstruther is the largest community on the stretch of north-shore coastline of the Firth of Forth known as the East Neuk. Originally a fishing village, the main industry is now tourism and with a 9 hole golf course, pleasure craft mooring in the harbour, and sightseeing and wildlife cruises to the Isle of May, home to the UK's largest Puffin population.

Other local attractions include The Scottish Fisheries Museum, The Secret Bunker, Famous Fish and Chip Shop along with an array of restaurants including the Cellar' and hostelryes.

The Waid Academy, the local comprehensive school and community centre, offers a wide range of activities. Additional entertainment can be found in St Andrews, just 9 miles away, while Dundee is 23 miles and Edinburgh is 50 miles away. EPC - C









Entrance Porch	8'5 x 3'8	2.57m x 1.12m
Lounge	17'8 x 13'3	5.38m x 4.04m
Family Dining Kitchen	30'9 x 10'7	9.37m x 3.23m
Utility	8'9 x 5'4	2.67m x 1.63m
WC	5'9 x 3'6	1.75m x 1.07m
Master Bedroom	11'3 x 8'9	3.43m x 2.67m
En Suite	7'0 x 5'4	2.13m x 1.63m
Bedroom 2	11'5 x 8'1	3.48m x 2.46m
Bedroom 3	9'7 x 6'9	2.92m x 2.06m
Bedroom 4	8'9 x 7'3	2.67m x 2.21m
Bathroom	6'4 x 6'1	1.93m x 1.85m

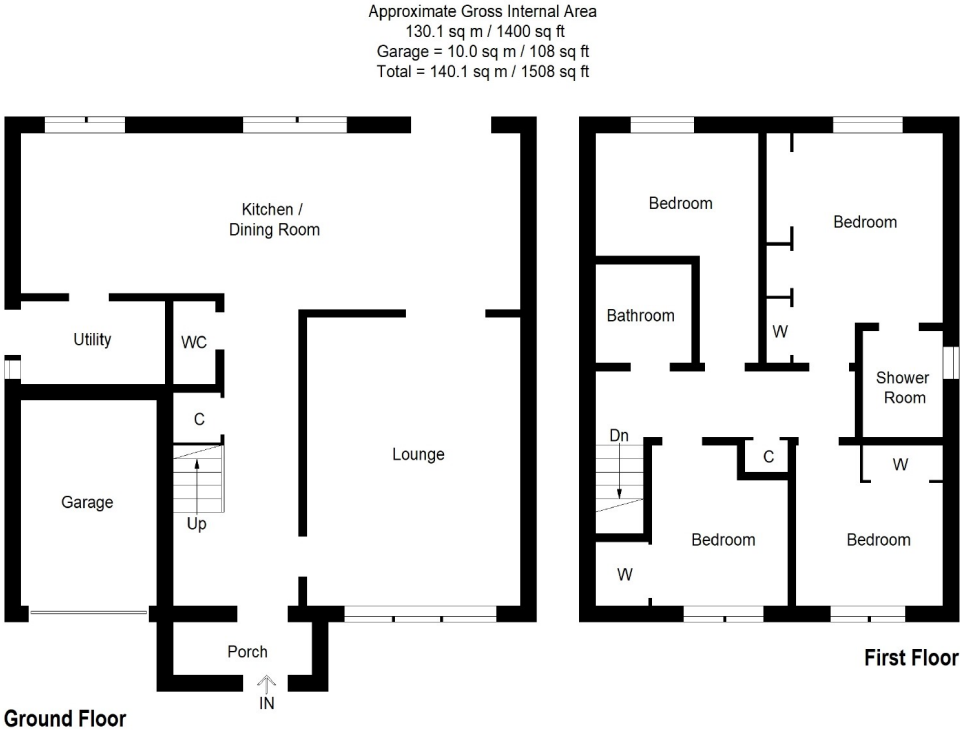


Illustration For Identification Purposes Only. Not To Scale (ID514995 / Ref:68833)

aspc êspc fifespc pspc tspc spc

