



37 Shore Road

| Anstruther | KY10 3DZ

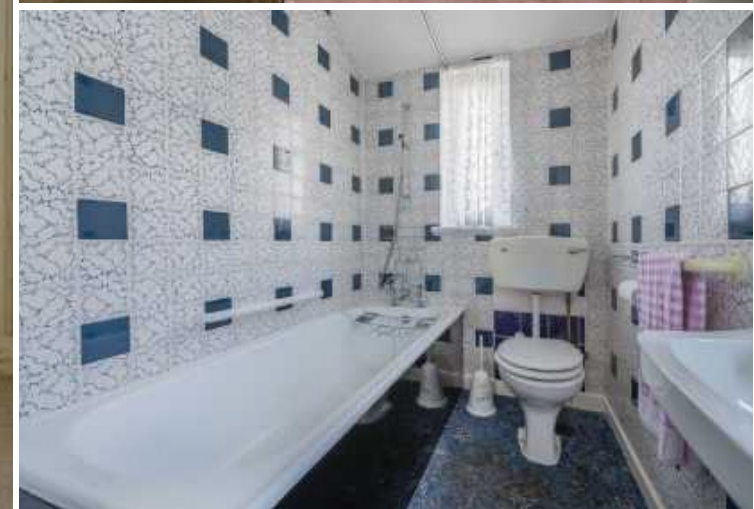
Thorntons 
Let's get a move on!

| 37 Shore Road | Anstruther | KY10 3DZ

Offers Over £170,000



This is a rare and exciting development opportunity. Detached traditional home with ornate cornice work featuring pipers. Corner location with drive, gardens, garage. Partial sea views. Close to Golf course and coastal walk.



The ground floor leads to the hall with superb cornice work with pipers, ceiling rose and arch way. The living room is to the front of the property and is dual aspect. The dining room also has an ornate cornice. The kitchen has a back door to the garden. The master bedroom is on the ground floor with an en-suite bathroom. The second bedroom is to the rear looking over the garden. The staircase leads up to a mezzanine level back door. The first floor has two bedrooms one with an eaves cupboard. The bedrooms both enjoy roof top sea views. The shower room completes the first floor. The garden has mono block creating a drive and seating areas. The flower beds have brick edging and an outhouse provides useful storage. The garage is adjacent to the house.



- Development Opportunity
- Living Room & Dining Room
- Kitchen
- Four Bedrooms
- Shower Room & En Suite
- Corner Location
- Gardens & Garage
- EPC G
- Ornate Piper Cornice
- Close to Golf Course



Living Room	14'2 x 10'8 4.32m x 3.25m
Dining Room	13'4 x 10'8 4.06m x 3.25m
Kitchen	14'0 x 6'6 4.27m x 1.98m
Bedroom 1	14'3 x 10'9 4.34m x 3.28m
En Suite	6'2 x 4'9 1.88m x 1.45m
Bedroom 4	12'3 x 9'4 3.73m x 2.84m
Bedroom 2	17'1 x 14'0 5.21m x 4.27m
Bedroom 3	17'0 x 12'5 5.18m x 3.78m
Shower Room	6'3 x 6'3 1.91m x 1.91m

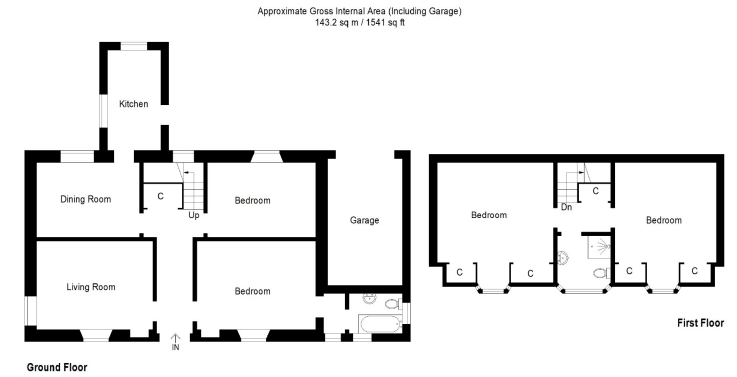


Illustration For Identification Purposes Only. Not To Scale (ID:485969 / Ref:67730)

aspc êspc fifespc pspc tspc spc scotland

