



13 Queen Elizabeth Road

| Pittenweem | KY10 2PU

**Thorntons**   
*Let's get a move on!*

| 13 Queen Elizabeth Road | Pittenweem | KY10 2PU

Offers Over £170,000



Recently renovated semi detached home in popular residential area. Large garden. Wood burner stove. Open plan dining kitchen. Partial sea view from living room. Close to excellent local amenities.





This beautifully presented home benefits from fresh decor and a feature wood burning stove within the living room. The ground floor reception hall has coat hooks and gives access to the living room which has a glimpse of the sea when at the window. The spacious dining room is open to the kitchen which leads directly out to the spacious mature back garden. There is a walk in pantry off the kitchen. The contemporary bathroom has a over bath shower, wash hand basin and wc. The first floor has two spacious bedrooms one with a sea view, the second bedroom has eaves cupboard. The property benefits from gas central heating and double glazing. The drive provides off street parking for two cars and gives access to the garage.

The charming East Neuk fishing village of Pittenweem with its archetypal pan tiled rooftops and crow stepped gables is also home to the now famous Arts Festivals and has excellent local amenities including shops, village store, cafes, public houses, The Dory restaurant, galleries, school and Doctors' surgery. The historic university town of St Andrews is 10 miles away.

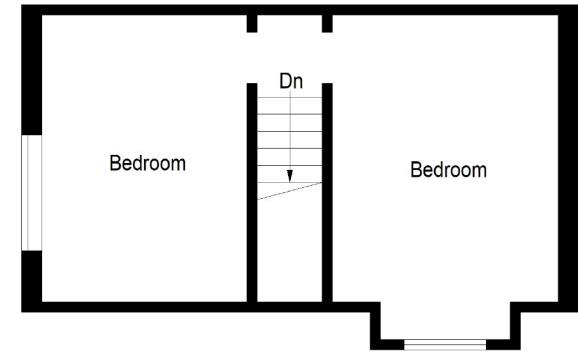


- Beautifully Presented
- Wood Burning Stove
- Open Plan Dining Kitchen
- Two Double Bedrooms
- Bath Room
- Gardens
- Garage
- Gas Central Heating
- Double Glazing
- EPC-C

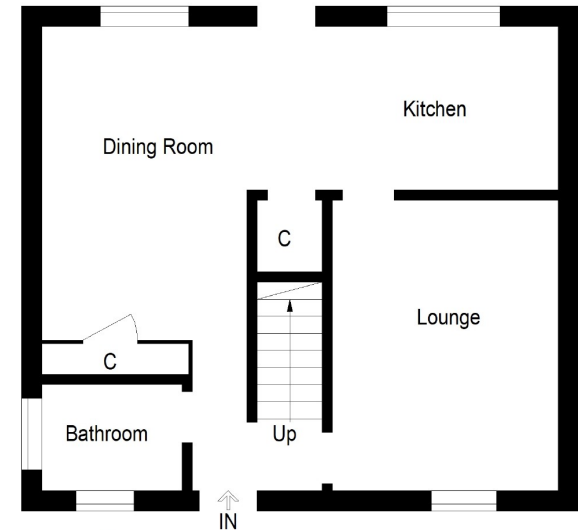


Living Room	14'8 x 10'7 4.47m x 3.23m
Dining Room	13'1 x 10'0 3.99m x 3.05m
Kitchen	14'7 x 7'9 4.45m x 2.36m
Bath Room	6'9 x 5'4 2.06m x 1.63m
Bedroom 1	16'7 x 10'9 5.05m x 3.28m
Bedroom 2	13'9 x 10'5 4.19m x 3.18m

Approximate Gross Internal Area  
84.1 sq m / 905 sq ft



**First Floor**



**Ground Floor**

Illustration For Identification Purposes Only. Not To Scale (ID493606 / Ref:68028)

aspc êspc fifespc pspc tspc spc scotland

